

MAR 11 2024



MIDLAND COUNTY DRAIN COMMISSIONER
JOSEPH SOVA
220 W Ellsworth Street
Midland, MI 48640

MARIA SANDOW, SUPERVISOR
LARKIN CHARTER TOWNSHIP
3027 N. JEFFERSON ROAD
MIDLAND, MI 48642

KENS LANE DRAIN

NOTICE OF DAY OF REVIEW OF DRAINAGE DISTRICT BOUNDARIES
AND REVIEW OF APPORTIONMENTS

DATE: Thursday, March 21, 2024
TIME: 9:00 a.m. to 5:00 p.m.
LOCATION: Midland County Services Building
Second Floor Conference Room
220 W. Ellsworth Street
Midland, MI 49640
QUESTIONS: (989) 832-6770

The Midland County Drain Commissioner will hold a Day of Review of Drainage District Boundaries and Apportionments on the above date, time, and location. The Day of Review is an opportunity to review the Kens Lane Drain Drainage District boundaries and the tentative apportionment of benefits for each parcel and municipality within the Kens Lane Drain Drainage District. A map of the proposed Drainage District boundary revisions can be found enclosed with this notice and on the Midland County Drain Commissioner's website at: <https://midlandcountymi.gov/drain-calendar>.

The Drain Commissioner, engineers, and/or other staff members will be available to assist individuals throughout the day and make revisions where necessary. There is no need to schedule an appointment for a specific time on the Day of Review. The computation of costs for the Drain will also be available at the Day of Review. Drain assessments are collected in the same manner as property taxes and will appear on your Winter Tax bill. If drain assessments are being collected for more than one (1) year, you may pay the assessment in full with any interest to date at any time and avoid further interest charges.

Persons with disabilities needing accommodations for effective participation in the Day of Review should contact the Drain Commissioner's Office at the number noted above (voice) or through the Michigan Relay Center at 7-1-1 (TDD) at least 24 hours in advance of the Day of Review to request mobility, visual, hearing, or other assistance.

Comments on the apportionment of benefits may be submitted to the Drain Commissioner in writing before the date of the Day of Review to the Midland County Drain Commissioner at 220 W. Ellsworth Street, Midland, MI 48640 or by email to drain@co.midland.mi.us, or comments may be submitted in writing or verbally at the Day of Review. Comments submitted in advance

must be received by the Drain Commissioner prior to the Day of Review to ensure consideration.

The following is a list of any county, township, city, or village to be assessed: Midland County and Larkin Charter Township.

The below additional information can be found on the Notice of Bid Letting on the Drain Commissioner's website at <https://midlandcountymi.gov/drain-calendar> (select "Past Events" in the drop-down menu under Meeting Calendar). The Notice of Letting can also be accessed directly using the following link: <https://midlandcountymi.gov/index.php?section=drain-calendar&evtid=480>.

- A description of the lands constituting the drainage district;
- Number and length of sections, the average width of each section, and if the drain will be closed, the amount and specifications of all tile or pipe required;
- Location, number, type, and size of culverts or bridges to be installed, if any; and
- Conditions upon which the contract will be awarded.

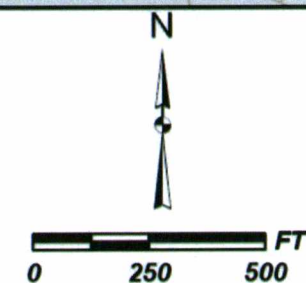
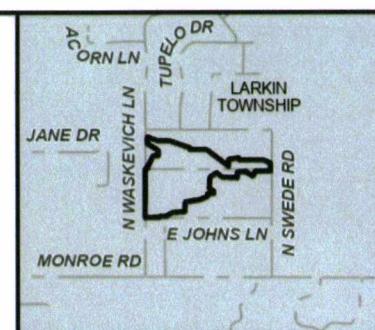
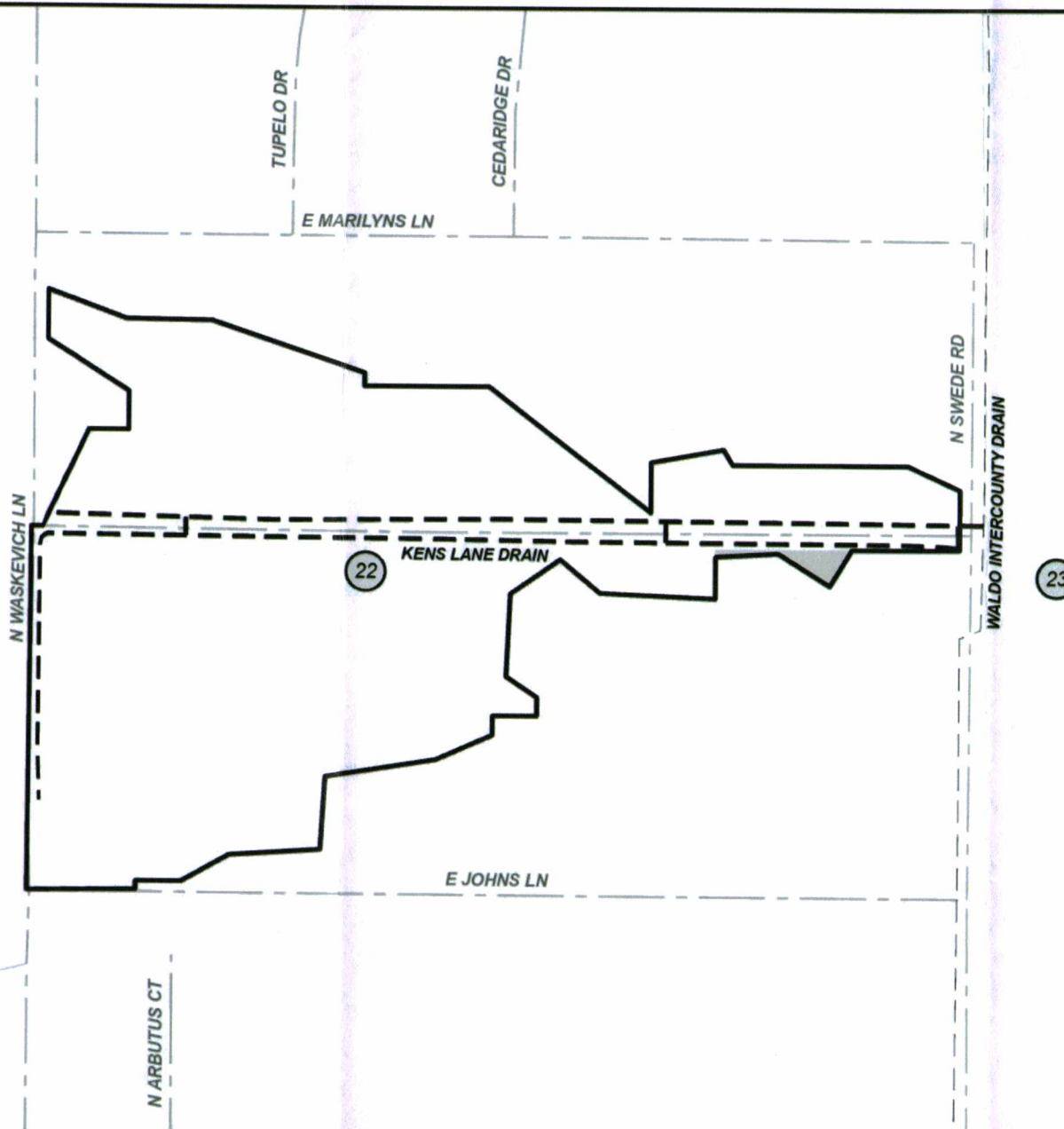
You may appeal the Drain Commissioner's decision to revise the district boundary to the Midland County Circuit Court within ten (10) days. You may appeal the Drain Commissioner's determination of apportionments to the Midland County Probate Court within ten (10) days.

Joseph Sova
Midland County Drain Commissioner

KENS LANE DRAIN DRAINAGE DISTRICT

MIDLAND COUNTY DRAIN COMMISSIONER

JOSEPH SOVA



LEGEND

- DRAINAGE DISTRICT BOUNDARY
- DRAIN
- OUTLET WATERCOURSE
- LANDS ADDED
- MUNICIPALITY BOUNDARIES
- STATE ROADS
- COUNTY ROADS
- LOCAL ROADS
- RAILROAD